



VOCO  
**MECHANICAL  
MANUFACTURING**



**江西沃科工贸有限公司**

JIANGXI VOCO INDUSTRIAL AND TRADE CO., LTD.

Mobile: +86-17707952006

Web: [www.vocoair.com](http://www.vocoair.com)

E-mail: [vocochina@hotmail.com](mailto:vocochina@hotmail.com)

Add: Room 309, Podium Building, Gaohang Building, No. 899, Huoju 5th Road, High-tech Zone, Nanchang City



Whatsapp



Wechat

**江西沃科工贸有限公司**

JIANGXI VOCO INDUSTRIAL AND TRADE CO., LTD.



Workshop corner  
车间一角

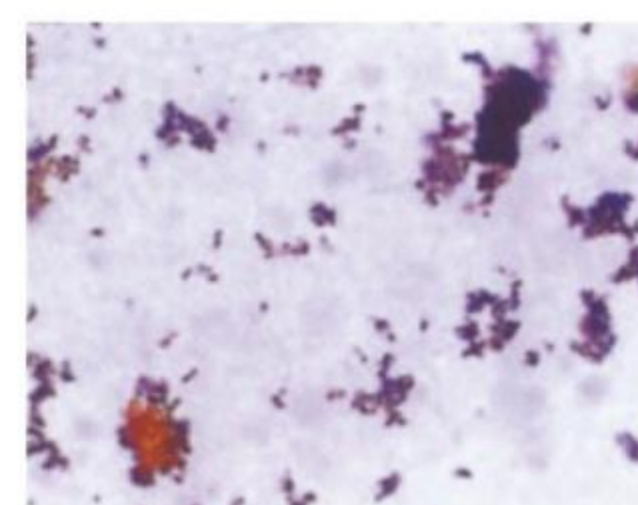


Company profile  
公司简介

As a pioneer in screw compressor manufacturing technology, VOCO is devoted to excellent performance. We not only provide reliable, efficient, and robust compressed air solutions, but also can provide OEM service, ODM service and training service. Voco always stand on the stage of our customers and make our product unique and distinguished from the market. Applying our own screw air end with German technology to our screw compressors, we are confident to offer qualified product and service to customers.



Profile of treated tank.



The state of tiny scrap iron of untreated water of air tank's inner wall draining from air compressor under electron microscope.



Water draining from treated inner wall of air compressor.



Water draining from untreated inner wall of air compressor.

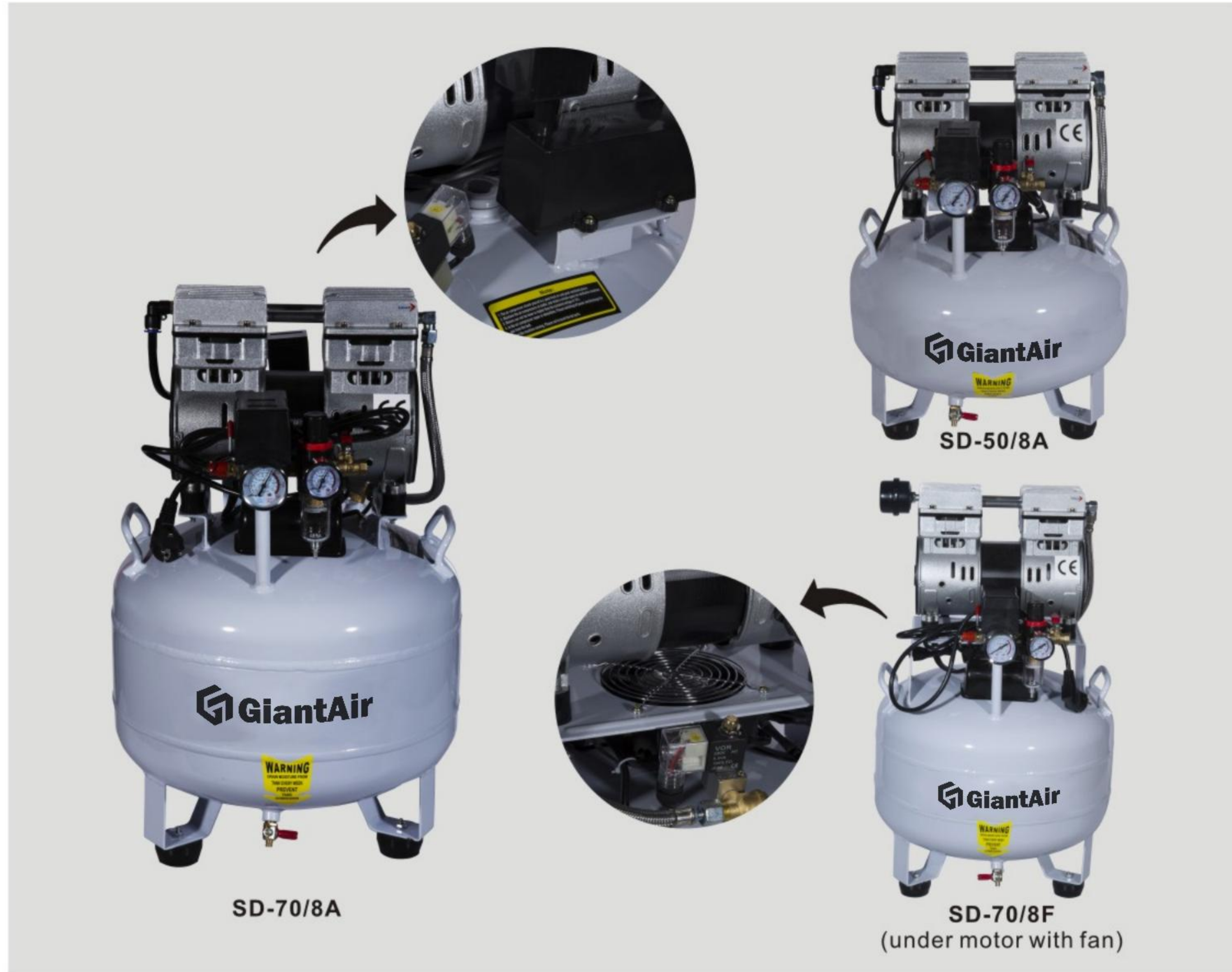
FEATURES

SD Series product is the machine electricity integral whole for the new generation to turn the product, super speed electrical engineering in adoption in host, all close the advanced construction in, dust palliative...etc. in, compare with local product, The noise lowers biggest, it is real to have the construction tightly packed. The physical volume is small. The weight is light, hull drapery can the extensive usage experiment in the medical treatment, hygiene, science, daily life etc. Realm.

The Advance Technology of GiantAir Brand Oil-free Air Compressor

Treatment of air tank's inner wall: Due to complex technology and large investment of anticorrosive treatment, the common air tank's inner wall of air compressor is untreated; hence the leaving rust pollutes the outlet air which is easy to plug pipes of dentistry the rapy unit and to wear bears of dentistry drill. In addition, long time corrosion of air tank will reduce its life and safety and it's hard to clean rust of drainage. Our company develops anticorrosive treatment production line of air tank's inner wall with large investment. The inner wall of air tank is painted in epoxy resin, which is widely used to food container's anticorrosive treatment. It enables the inner wall free of rust, prolongs life of air tank and protects dentistry the rapy unti.

牙科系列 Dental series



✘ 技术参数 TECHNICAL PARAMETER

Model	Voltage Frequency		Power		Air flow F.A.D		Air flow F.A.D 5bar(72psi)		Speed r.p.m	Noise db	Tank			Packing Measurement LxWxH(mm)	Weight kg	
	V	HZ	W	HP	L/min	C.F.M	L/min	C.F.M			L	GAL	BAR			psi
SD-50/8A	220-240	50	580	3/4	110	3.7	57	2	1400/1680	50	30	7.9	8	115	440x440x590	26
	110-220	60														
SD-70/8A	220-240	50	850	1.1	165	5.5	82	2.8	1400/1680	55	38	9.3	8	115	440x440x640	28
	110-220	60														
SD-70/8F	220-240	50	850	1.1	165	5.5	82	2.8	1400/1680	55	38	9.3	8	115	440x440x590	28.5
	110-220	60														

牙科系列 Dental series



✘ 技术参数 TECHNICAL PARAMETER

Model	Voltage Frequency		Power		Air flow F.A.D		Air flow F.A.D 5bar(72psi)		Speed r.p.m	Noise db	Tank			Packing Measurement LxWxH(mm)	Weight kg	
	V	HZ	W	HP	L/min	C.F.M	L/min	C.F.M			L	GAL	BAR			psi
SD-120/8A	220-240	50	1500	2	280	74	140	4.7	1400/1680	55	50	13.2	8	115	440x440x820	39
	110-220	60														
SD-120/8F	220-240	50	1500	2	280	74	140	4.7	1400/1680	55	50	13.2	8	115	440x440x850	40
	110-220	60														
SD-140/8B	220-240	50	850x2	2.2	330	11	165	5.5	1400/1680	60	65	17.2	8	115	440x440x670	45
	110-220	60														
SD-120/8G	220-240	50	1500	2	280	74	140	4.7	1400/1680	55	50	13.2	8	115	440x440x590	42
	110-220	60														

牙科系列 Dental series



**SD-70/8GL**  
(With air dry and air cooler)



**SD-140/8GL**  
(With air dryer and cooler)

 技术参数  
TECHNICAL PARAMETER

Model	Voltage Frequency		Power		Air flow F.A.D		Air flow F.A.D 5bar(72psi)		Speed r.p.m	Noise db	Tank				Max.pressure BAR psi	Packing Measurement LxWxH(mm)	Weight kg
	V/HZ		W	HP	L/min	C.F.M	L/min	C.F.M			L	GAL	BAR	psi			
SD-70/8GL	220-240/50		850	1.1	165	5.5	82	2.8	1400/1680	55	38	9.3	8	115	440x440x640	34	
	110-220/60																
SD-140/8GL	220-240/50		850x2	2.2	330	11	165	5.5	1400/1680	60	65	17.2	8	115	830x450x630	50	
	110-220/60																

牙科系列 Dental series



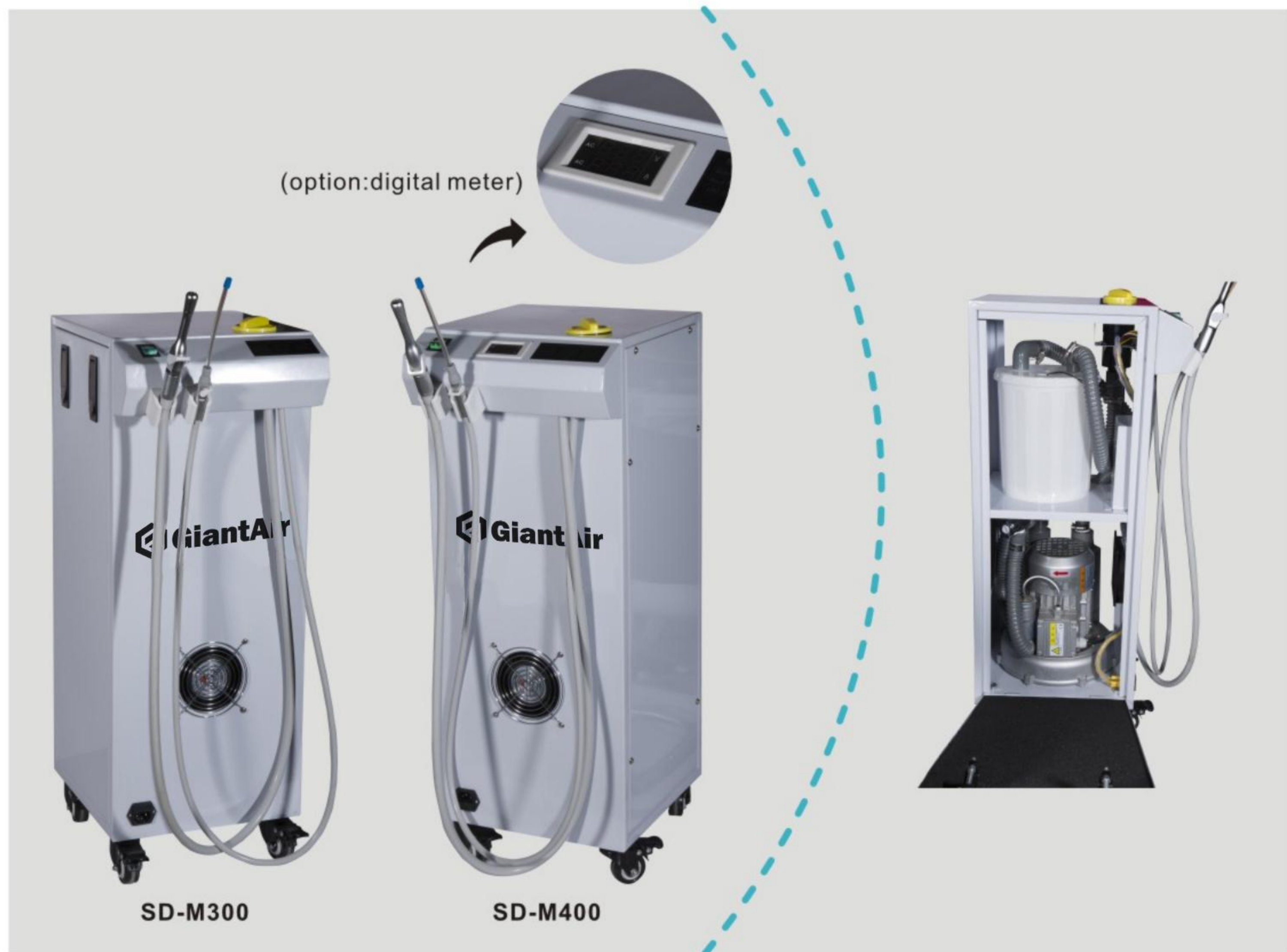
**SD-210/8GL**  
(With air dry and air cooler)



 技术参数  
TECHNICAL PARAMETER

Model	Voltage Frequency		Power		Air flow F.A.D		Air flow F.A.D 5bar(72psi)		Speed r.p.m	Noise db	Tank				Max.pressure BAR psi	Packing Measurement LxWxH(mm)
	V/HZ		W	HP	L/min	C.F.M	L/min	C.F.M			L	GAL	BAR	psi		
SD-210/8GL	220-240/50		850x3	3.3	495	16.6	247	8.3	1400/1680	50	100	26.5	8	115	1200x420x720	
	110-220/60															

移动牙科抽吸机系列 Mobile dental suction series



Special for Implant treatment

1. Enough pump flow of 400L/min, not only could suck away the dirt in the mouth, but also could suck the air with bacteria in the oral of patient to prevent the cross infection between the doctor and the patient.
2. Auto separation of air and water, and the waste water, dirty blood, saliva, dentin chips would be separated completely in patient's mouth.
3. The drainage bottle equip with liquid level sensing system, when the drainage bottle is nearly full, the machine will automatic stop. And the drainage bottle must be more than 5 hours of tightness test before leaving the factory to promise there is no leaks.
4. Two pieces of high volume ejector can use at the same time.
5. It can work close to the dental chair, thanks to internal high quality silencing material.

✘ 技术参数 TECHNICAL PARAMETER

Model	Volt. /Hz	Power(W)	Vacuum Pressure	Pump Flow	Noise level(dB)
SD-M300	110-240 50/60	300	-12Kpa	350L/MIN	50
SD-M400	110-240 50/60	400	-12Kpa	450L/MIN	52

牙科抽吸机系列 Dental suction system series



Product introduction

SD Series Dental Suction System's Advantages

- 1. Efficient separation, Compact structure, Low use-cost**  
Let air and liquid separate in the small room. Separation system and vacuum pump is connected in the same central driving shaft, don't need instal separation system in the dental unit, don't need any other traditional system's working cost---as water pump
- 2. Strong Power**  
Adopt width voltage and double frequency, motor with protection leve IP55(insulation grade F) as drive, accomplish turbine circulation suction power, lower noise, higher pressure, larger flowing. Offer the constant suction power for treatment
- 3. Regulation and cooling**  
BUILT-in auxiliary air valve, not only regulate suction power of system, but also ensure inside cooling of pump.
- 4. Corrosion resistance**  
Separation system adopt high grade engineering plastics, corrosion resistance, long use-life time
- 5. Two stage separation system**  
Innovative two stage separation system, have higher foam tolerance, ensure out-air without any water, avoid pump damage.

✘ 技术参数 TECHNICAL PARAMETER

型号 model	电源电压 (V) voltage	频率 (HZ) frequency	额定功率 (HZ) power	最高负压 (KPA) max vaccum pressure	噪音 (DB) noise	净重 (KG) net weight	机器尺寸 (MM) (宽x长x高) size of product	包装尺寸 (MM) (宽x长x高) packing size
SD-S01	110-220	50-60	400	-12	60	30	355x535x710	500x610x810
SD-S02	110-220	50-60	550	-15	65	32	375x535x710	500x610x810
SD-S03	110-220	50-60	750	-17	70	35	375x535x780	500x610x810
SD-S05	110-220	50-60	1300	-22	70	40	375x535x780	500x610x810

五金工具系列 Hardware tool series



SD-05  
(option:handle and wheels)

SD-09

✘ 技术参数 TECHNICAL PARAMETER

Option:  
Max pressure:10bar

Model	Voltage Frequency		Power		Air flow F.A.D		Air flow F.A.D 5bar(72psi)		Speed r.p.m	Noise db	Tank			Packing Measurement LxWxH(mm)	Weight kg	
	V	HZ	W	HP	L/min	C.F.M	L/min	C.F.M			L	GAL	BAR			psi
SD-05	220-240	50	580	3/4	110	3.7	57	2	1400/1680	45	5	1.3	8	115	360x365x415	18
	110-220	60														
SD-09	220-240	50	580	3/4	110	3.7	57	2	1400/1680	45	9	2.3	8	115	510x210x520	16
	110-220	60														

五金工具系列 Hardware tool series



SD-14

SD-24

SD-18

✘ 技术参数 TECHNICAL PARAMETER

Option:  
Max pressure:10bar

Model	Voltage Frequency		Power		Air flow F.A.D		Air flow F.A.D 5bar(72psi)		Speed r.p.m	Noise db	Tank			Packing Measurement LxWxH(mm)	Weight kg	
	V	HZ	W	HP	L/min	C.F.M	L/min	C.F.M			L	GAL	BAR			psi
SD-14	220-240	50	850	1.1	165	5.5	8.2	2.8	1400/1680	55	18	9.3	8	115	440x440x590	20
	110-220	60														
SD-18	220-240	50	1500	2	280	9.4	140	4.9	1400/1680	55	18	4.7	8	11	530x250x520	24
	110-220	60														
SD-24	220-240	50	580	3/4	110	3.7	57	2	1400/1680	50	24	6.3	8	115	440x440x590	21
	110-220	60														

五金工具系列 Hardware tool series



✘ 技术参数 TECHNICAL PARAMETER

Option:  
Max pressure:10bar

Model	Voltage Frequency		Power		Air flow F.A.D		Air flow F.A.D 5bar(72psi)		Speed r.p.m	Noise db	Tank			Packing Measurement LxWxH(mm)	Weight kg	
	V/Hz		W	HP	L/min	C.F.M	L/min	C.F.M			L	GAL	BAR			psi
SD-30	220-240/50		850	1.1	165	5.5	82	2.8	1400/1680	45	30	7.9	8	115	600x300x600x	26
	110-220/60															
SD-50A	220-240/50		1500	2	280	9.4	140	4.9	1400/1680	45	50	13.2	8	115	700x300x680	26
	110-220/60															

五金工具系列 Hardware tool series



✘ 技术参数 TECHNICAL PARAMETER

Option:  
Max pressure:10bar

Model	Voltage Frequency		Power		Air flow F.A.D		Air flow F.A.D 5bar(72psi)		Speed r.p.m	Noise db	Tank			Packing Measurement LxWxH(mm)	Weight kg	
	V/Hz		W	HP	L/min	C.F.M	L/min	C.F.M			L	GAL	BAR			psi
SD-50B	220-240/50		580x2	1.5	220	7.4	114	4	1400/1680	50	50	13.2	8	115	700x300x630	45
	110-220/60															
SD-70	220-240/50		850x2	2.2	330	11	165	5.5	1400/1680	55	70	18.5	8	115	800x330x620	52
	110-220/60															

五金工具系列 Hardware tool series



✘ 技术参数 TECHNICAL PARAMETER

Option:  
Max pressure:10bar

Model	Voltage Frequency		Power		Air flow F.A.D		Air flow F.A.D 5bar(72psi)		Speed r.p.m	Noise db	Tank		Max.pressure		Packing Measurement LxWxH(mm)
	V/Hz		W	HP	L/min	C.F.M	L/min	C.F.M			L	GAL	BAR	psi	
SD-80	220-240/50		580x3	2.3	330	11.1	165	5.5	1400/1680	55	80	21	8	115	980x370x720
	110-220/60														
SD-90	220-240/50		850x3	3.3	495	16.6	247	8.3	1400/1680	60	90	23.8	8	115	1090x380x750
	110-220/60														

五金工具系列 Hardware tool series



✘ 技术参数 TECHNICAL PARAMETER

Option:  
Max pressure:10bar

Model	Voltage Frequency		Power		Air flow F.A.D		Air flow F.A.D 5bar(72psi)		Speed r.p.m	Noise db	Tank		Max.pressure		Packing Measurement LxWxH(mm)
	V/Hz		W	HP	L/min	C.F.M	L/min	C.F.M			L	GAL	BAR	psi	
SD-150	220-240/50		580x4	3	440	14.8	220	7.4	1400/1680	58	150	39.7	8	115	1300x420x720
	110-220/60														
SD-200	220-240/50		850x4	4.4	660	22.2	330	11.1	1400/1680	60	200	52.9	8	115	1400x420x760
	110-220/60														



五金工具系列 Hardware tool series



SD-120/8H  
(with wheels and fan)



SD-240/8

✘ 技术参数  
TECHNICAL PARAMETER

Option:  
Max pressure:10bar

Model	Voltage Frequency		Power		Air flow F.A.D		Air flow F.A.D 5bar(72psi)		Speed	Noise	Tank			Max.pressure	Packing Measurement	Weight
	V/HZ		W	HP	L/min	C.F.M	L/min	C.F.M			r.p.m	db	L			
SD-120/8H	220-240/50	1500	2	280	9.4	140	4.9	1400/1680	55	50	13.2	8	115	440x440x830	40	
	110-220/60															
SD-240/8	220-240/50	3000	4	560	18.8	280	9.6	1400/1680	58	70	18.5	8	115	800x330x670	26	
	110-220/60															

五金工具系列 Hardware tool series



SD-150/8A



(with intelligent controller)



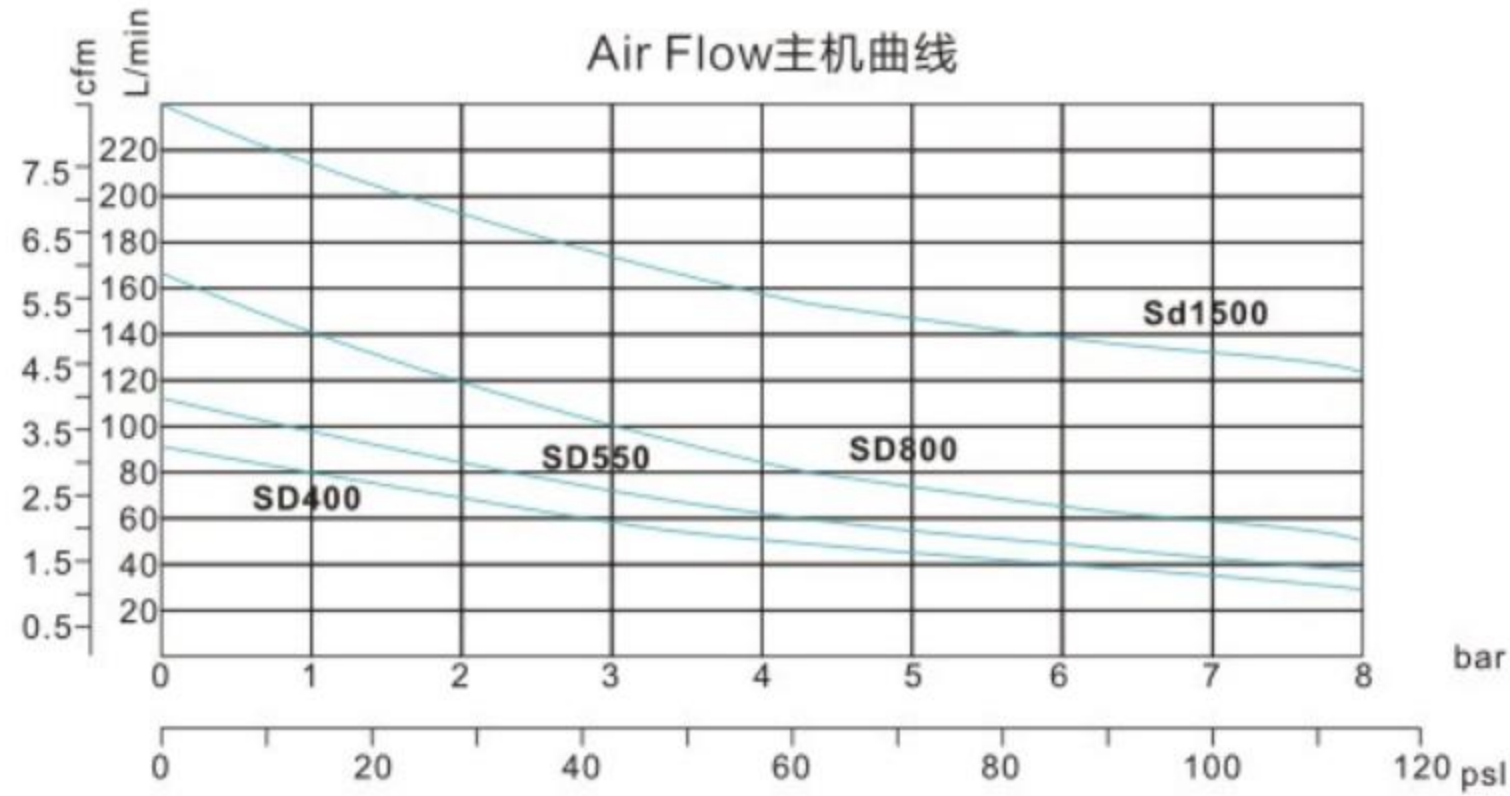
SD-200/8A

✘ 技术参数  
TECHNICAL PARAMETER

Option:  
Max pressure:10bar

Model	Voltage Frequency		Power		Air flow F.A.D		Air flow F.A.D 5bar(72psi)		Speed	Noise	Tank			Max.pressure	Packing Measurement	Weight
	V/HZ		W	HP	L/min	C.F.M	L/min	C.F.M			r.p.m	db	L			
SD-150/8A	220-240/50	4500	6	840	28.2	420	14.7	1400/1680	65	150	39.7	8	115	1300x420x720	105	
	110-220/60															
SD-200/8A	220-240/50	6000	6	1120	37.6	560	19.6	1400/1680	68	200	52.9	8	115	1500x420x720	130	
	110-220/60															

五金工具配件系列 Hardware Tool Accessories Series



项目 型号	Date	电压/频率 Voltage/Frequency	功率 Power	流量 Air flow F.A.D	流量(5公斤) Air flow F.A.D 5bar(72psi)	转速 Speed	噪音 Noise	储气罐 Tank	最高压力 Max.pressure	热保护器 Thermal Protector	包装尺寸 Packing Measurement	重量 Weight	备注
		(V/Hz)	W HP	L/min C.F.M	L/min C.F.M	r.p.m	db	BAR	psi		LxWxH(mm)	kg	
Sd400		220-240/50 110-220/60	480 3/5	90 3.14	34 1.59	1400 1680	48	8	115	Yes	365x330x265	19	一个纸箱包两台机器 Two units in one carton
SD550		220-240/50 110-220/60	580 3/4	110 3.7	57 2	1400 1680	50	8	115	Yes	365x340x270	22	
SD800		220-240/50 110-220/60	850 1.1	165 5.4	76 2.7	1400 1680	55	8	115	Yes	385x335x295	23	
SD1500		220-240/50 110-220/60	1200 2	280 10	140 5	1400 1680	58	8	115	Yes	400x380x300	36	

五金工具配件系列 Hardware Tool Accessories Series



高压管 braided pipe    电磁阀 solenoid valve    压力表 pressure gauge    球阀 ball valve    压力开关总成 pressure limit



箱体 crankcase    缸盖 cylinder head    消音器 air filter    风扇 fan



压力开关 pressure switch    定子, 转子 rotor and stator    连杆 connecting rod    消音器 air filter



阀板 valve plate    气缸 cylinder    风叶 fan    风罩 fan cover



皮碗 piston cup    轴承和曲柄 crank and bearing    弯头 elbow    单向阀 check valve    接头 connector

真空泵系列 Vacuum pump series



✘ 技术参数 TECHNICAL PARAMETER

型号 Model	最大真空 Max vacuum	噪音 Noise	功率 Power	电压 Voltage	外形尺寸 Size
SD-550K	-98KPA	55db	550W	110-240V	27x13x20cm
SD-800K	-98KPA	55db	850W	110-240V	27x13x23cm
SD-1500K	-98KPA	58db	1500W	110-240V	29x16x29cm
SD-400G	-98KPA	45db	480W	110-240V	27x15x20cm

真空泵系列 Vacuum pump series



✘ 技术参数 TECHNICAL PARAMETER

型号 Model	最大真空 Max vacuum	噪音 Noise	功率 Power	电压 Voltage	外形尺寸 Size	储气罐 Tank
SD30K	-98KPA	55db	850W	110-240V	57x26x56cm	30L
SD-50K	-98KPA	58db	1500W	110-240V	57x26x56cm	50L

脉冲清洗机系列 Cleaner of impulse series



科技时代 高端技术

24V安全电压，双脉冲，智能变频，100米遥控。产品操作简单，静音环保，免维护，寿命长，适用于地暖管道，自来水管，热水器等管道清洗。

High-end Technology in the Era of Science and Technology

24V Safety Voltage, Dual Pulse, Intelligent Frequency Conversion, 100m Remote Control. The product is simple to operate, quiet, environmentally friendly, maintenance-free, long life, suitable for the cleaning of heating pipes, tap pipes, water heaters and other pipes.

Self-priming dual-purpose

Frequency conversion pulse

Independent research and development leading innovation

Safe voltage

Remote control operation

清洗技术特点是：

- 1.不用解管，将清洗机用连接管接在分水器上即可完成清洗工作，避免了解管的麻烦和对管路的损害。
- 2.不用任何药剂，对管路和系统部件无腐蚀，排放无污染，绿色环保。
- 3.不堵塞，因为清洗是以气和水为介质，所以适用于各复杂管路系统清洗。
- 4.设计人性化，设备小型轻便，操作非常简单，一看就会。
- 5.高效节能，清洗100平方米的住宅，1小时内即可完成，用水0.1吨，用电1度。
- 6.清洗质量检验方法简单，用眼可直接观察排污效果，也可清洗前后解管进行对比，效果一目了然。

The cleaning technology is characterized by:

- 1.The cleaning work can be completed by connecting the connecting pipes of the cleaning machine to the water distributor without releasing the pipes, thus avoiding the trouble of releasing the pipes and the damage to the pipes.
- 2.Without any chemicals, no corrosion to pipes and system components, no pollution to emissions, green environmental protection.
- 3.No clogging, because the cleaning medium is air and water, so it is suitable for the cleaning of complex pipeline systems.
- 4.The design is humanized, the equipment is small and portable, and the operation is very simple.
- 5.Efficient and energy-saving, cleaning 100 square meters of residential buildings, can be completed in an hour, using 0.1 tons of water, 1 degree of electricity.
- 6.The inspection method of cleaning quality is simple. Eye can directly observe the effect of sewage discharge, and can also be compared before and after cleaning. The effect is clear at a glance.

技术参数 TECHNICAL PARAMETER

型号 Model	输入电压 Voltage	输出气压 Air pressure	配套功率 Power	自吸 Self suckin	气罐容积 Tank	外形尺寸 Size	遥控 Remote control
SD-30Q	110-220V	0~0.8MPA	0.6KW	无 (可另配) Option	30L	53x24x55cm	选配 (Option)
SD-60Q	110-220V	0~0.8MPA	1.2KW	无 (可另配) Option	60L	70x30x56cm	选配 (Option)

产品内部配件 PRODUCT INTERIOR ACCESSORIES

